



Queensland Hydraulics Pty Ltd

Your Local Source of Engineered Hydraulic Cylinders

SERIES A2000 / A3000 STAINLESS STEEL HYDRAULIC CYLINDERS A.S.A.E. INTERCHANGEABLE

- STANDARD BORE SIZE 2", 2½", 3", 3½", 4" (larger sizes available)
- STANDARD ROD SIZE 1⅛", 1¼", 1½", 1¾" (larger sizes available)
- MAXIMUM LENGTH 6.0 MTRS (consult factory)
- CERAMIC COATED ROD OPTION (consult factory)
- FACTORY TESTED (test certificate issued prior to delivery)
- FACTORY INSTALLED CARTRIDGE VALVES
(Fitted and Tested Load Holding and Directional cartridge valves with S/S covers)
- MAXIMUM OPERATING PRESSURES
 - A2000 up to 14 MPa (2,000 psi)
 - A3000 up to 21 MPa (3,000 psi)



CONTACT DETAILS

Address: Building C, Phoenix Estate,
210 Evans Rd., Salisbury,
Queensland 4107

Phone: 07 3276 7533

Fax: 07 3276 8233

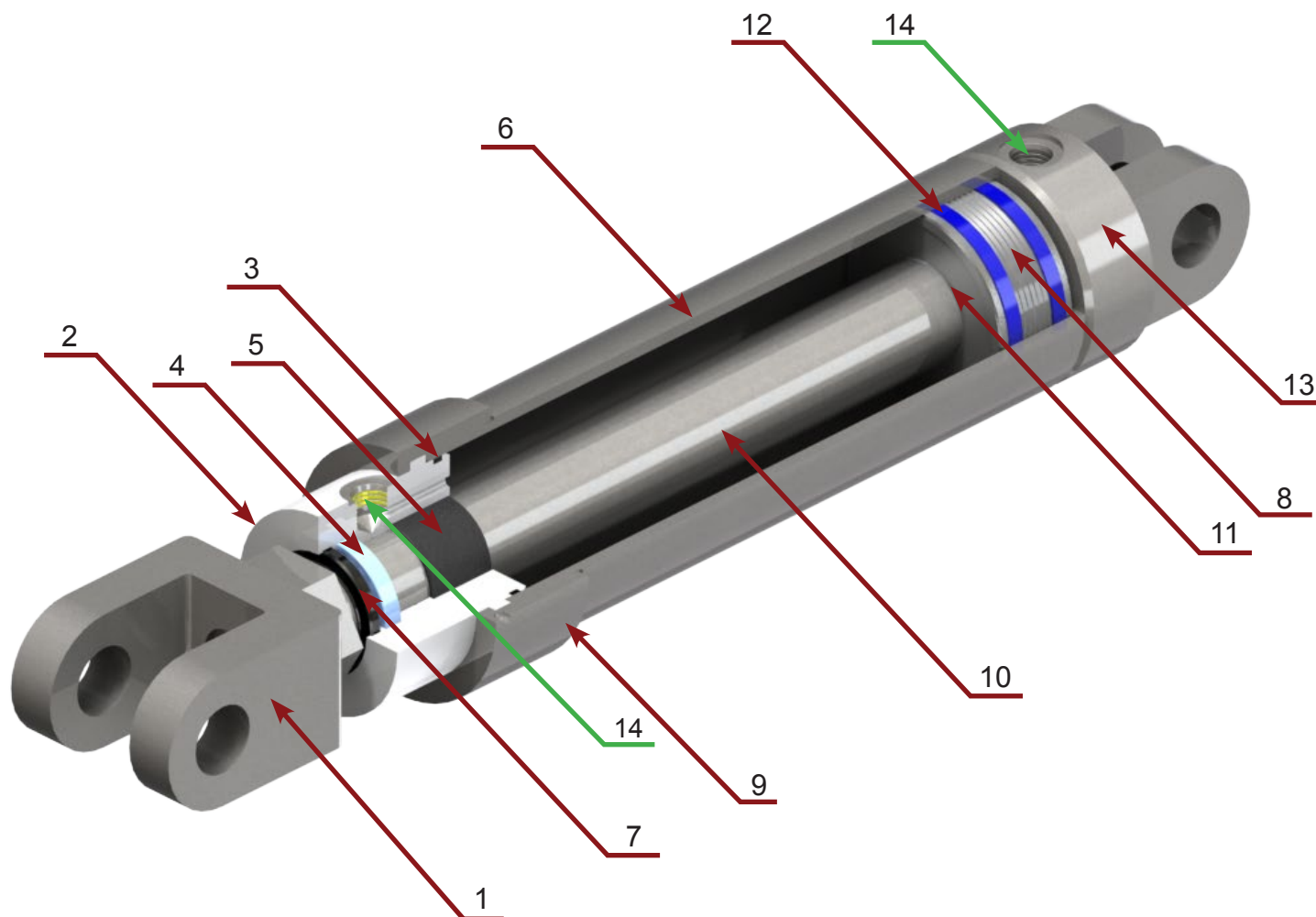
Web: www.hydraulics.net.au

Email: admin@hydraulics.net.au

Cylinder Features and Maintenance Data

A2000 / A3000 Stainless Steel Hydraulic Cylinder

Ver 2.0



Item	Description	Material
1	Clevis	Stainless Steel
2	Gland	Stainless Steel
3	"O" Ring Seal	Nitrile
4	Rod Seal	Nitrile
5	Gland Bearing	ACM L7 Compound
6	Barrel	Stainless Steel
7	Rod Wiper	Synthetic

Item	Description	Material
8	Piston	Stainless Steel
9	Retainer	Stainless Steel
10	Piston Rod	Stainless Steel
11	“O” Ring Seal	Nitrile
12	Piston Seal	Nitrile Rubber + ACETAL
13	End Cap	Stainless Steel
14	Ports machined into End Caps	
No Dissimilar Metals		

Seal Kits

Cylinder Size	Part Number
2.0" X 1.125"	SKA -2000-200-1125-SS
2.5" X 1.25"	SKA -2000-250-125-SS
2.5" X 1.5"	SKA -2000-250-150-SS
3.0" X 1.5"	SKA -2000-300-150-SS
3.5" X 1.5"	SKA -2000-350-150-SS
4.0" X 1.75"	SKA -2000-400-175-SS



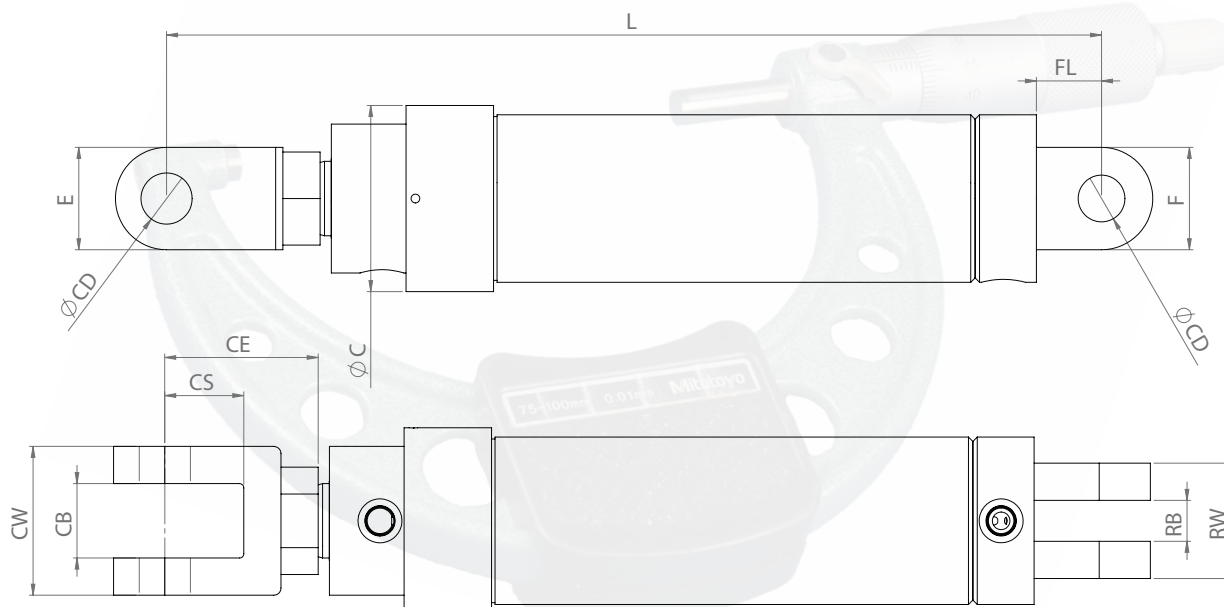
Queensland Hydraulics Pty Ltd

◀ Success through Quality ▶

Phone: 07 3276 7533
Fax: 07 3276 8233

Web: www.hydraulics.net.au
Email: admin@hydraulics.net.au



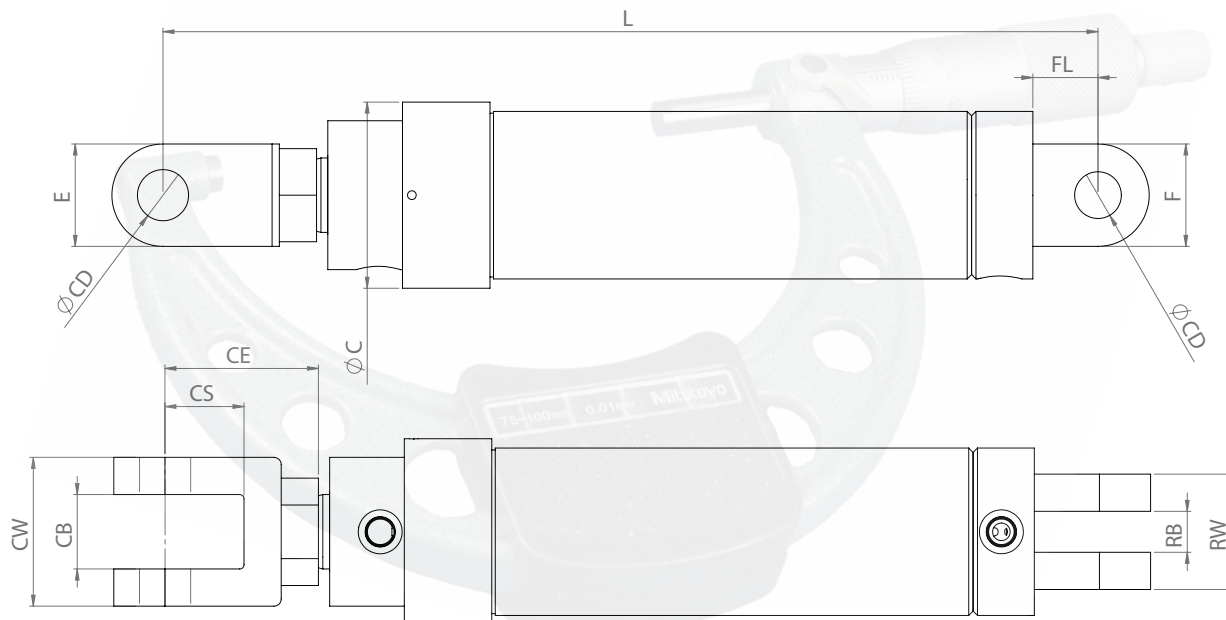


Cylinder Size Ø Bore X Ø Rod	Stroke	L Closed Centers	Ø C mm	CB mm	Ø CD mm	CE mm	CS mm	CW mm	E mm	F mm	FL mm	RB mm	RW mm	Port Size*
2.0" X 1.125"	6"	18.25"	70	28.58	25.48 ^{+0.05} _{-0.0}	82.5	51	68	51	50.8	48	28	60	3/4" UNO
	8"	20.25"												
	12"	24.25"												
	16"	28.25"												
	18"	30.25"												
	20"	32.25"												
	24"	36.25"												
	30"	42.25"												
	36"	48.25"												

Cylinder Size Ø Bore X Ø Rod	Stroke	L Closed Centers	Ø C mm	CB mm	Ø CD mm	CE mm	CS mm	CW mm	E mm	F mm	FL mm	RB mm	RW mm	Port Size*
2.5" X 1.25"	6"	18.25"	80	28.58	25.48 ^{+0.05} _{-0.0}	82.5	51	68	51	50.8	48	28	60	3/4" UNO
	8"	20.25"												
	12"	24.25"												
	16"	28.25"												
2.5" X 1.5"	18"	30.25"												
	20"	32.25"												
	24"	36.25"												
	30"	42.25"												
	36"	48.25"												
	48"	60.25"												

*BSPP PORTS AVAILABLE UPON REQUEST





Cylinder Size Ø Bore X Ø Rod	Stroke	L Closed Centers	Ø C mm	CB mm	Ø CD mm	CE mm	CS mm	CW mm	E mm	F mm	FL mm	RB mm	RW mm	Port Size*
3.0" X 1.5"	6"	18.25"	95	28.58	25.48 ^{+0.05} _{-0.0}	82.5	51	68	51	50.8	48	28	60	3/4" UNO
	8"	20.25"												
	12"	24.25"												
	16"	28.25"												
	18"	30.25"												
	20"	32.25"												
	24"	36.25"												
	30"	42.25"												
	36"	48.25"												

Cylinder Size Ø Bore X Ø Rod	Stroke	L Closed Centers	Ø C mm	CB mm	Ø CD mm	CE mm	CS mm	CW mm	E mm	F mm	FL mm	RB mm	RW mm	Port Size*
3.5" X 1.5"	8"	20.25"	106	28.58	25.48 ^{+0.05} _{-0.0}	82.5	51	79	63.5	63.5	48	28	79	3/4" UNO
	12"	24.25"												
	16"	28.25"												
	18"	30.25"												
	20"	32.25"												
	24"	36.25"												
	30"	42.25"												
	36"	48.25"												

Cylinder Size Ø Bore X Ø Rod	Stroke	L Closed Centers	Ø C mm	CB mm	Ø CD mm	CE mm	CS mm	CW mm	E mm	F mm	FL mm	RB mm	RW mm	Port Size*
4" X 1.75"	8"	20.25"	125	28.58	25.48 ^{+0.05} _{-0.0}	82.5	51	79	63.5	63.5	48	28	79	3/4" UNO
	12"	24.25"												
	16"	28.25"												
	18"	30.25"												
	20"	32.25"												
	24"	36.25"												
	30"	42.25"												
	36"	48.25"												

*BSPP PORTS AVAILABLE UPON REQUEST



Queensland Hydraulics Pty Ltd

◀ Success through Quality ▶

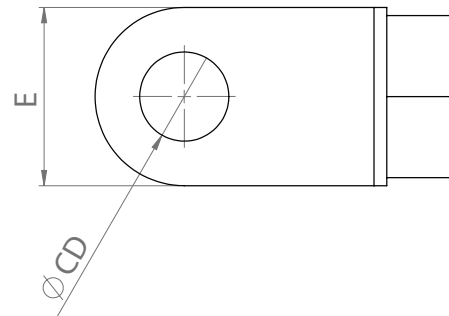
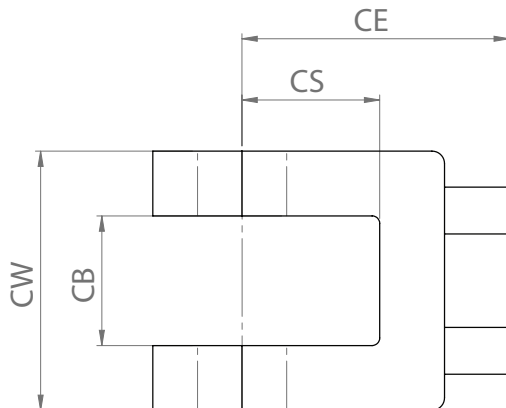
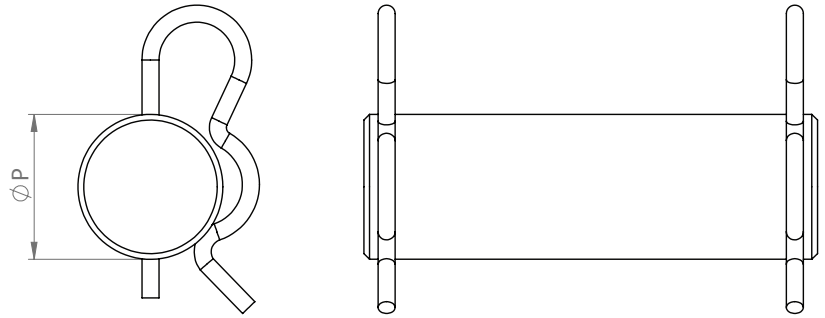
Phone: 07 3276 7533
Fax: 07 3276 8233

Web: www.hydraulics.net.au
Email: admin@hydraulics.net.au



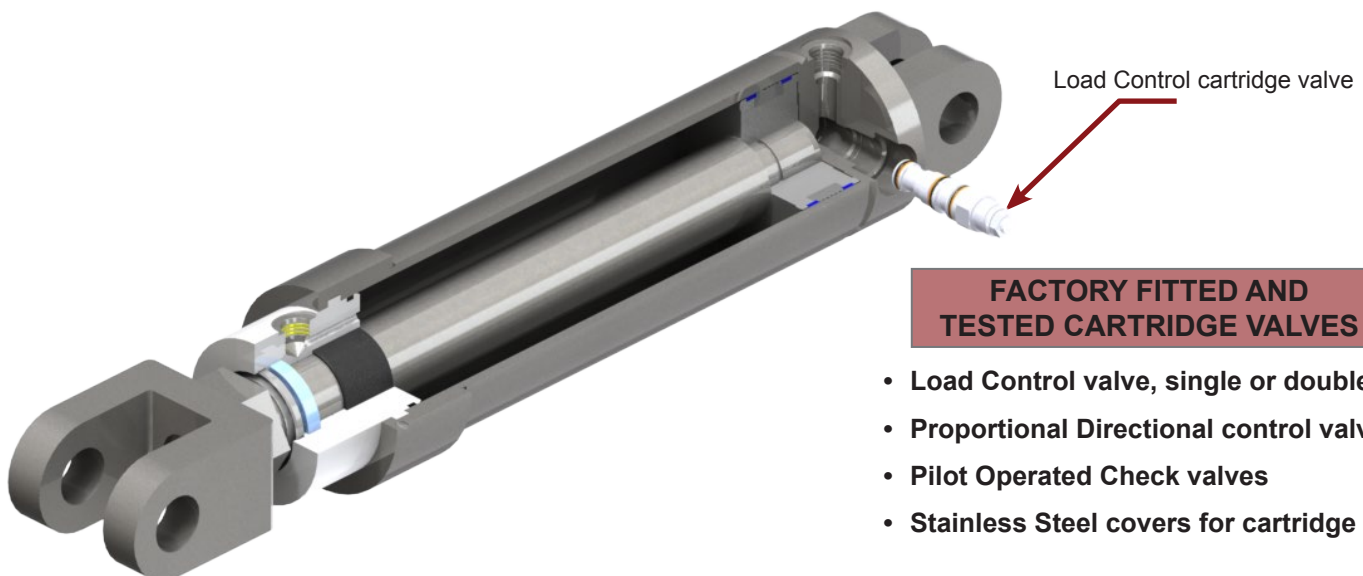
Clevis Pin

Cylinder Size	Part Number	Ø P
2.0" X 1.125"	APP-1000-SS	25.4 ^{+0.0} _{-0.05}
2.5" X 1.25"	APP-1000-SS	25.4 ^{+0.0} _{-0.05}
2.5" X 1.5"	APP-1000-SS	25.4 ^{+0.0} _{-0.05}
3.0" X 1.5"	APP-1000-SS	25.4 ^{+0.0} _{-0.05}
3.5" X 1.5"	APP-1000-SS	25.4 ^{+0.0} _{-0.05}
4.0" X 1.75"	APP-1000-SS	25.4 ^{+0.0} _{-0.05}



Clevis

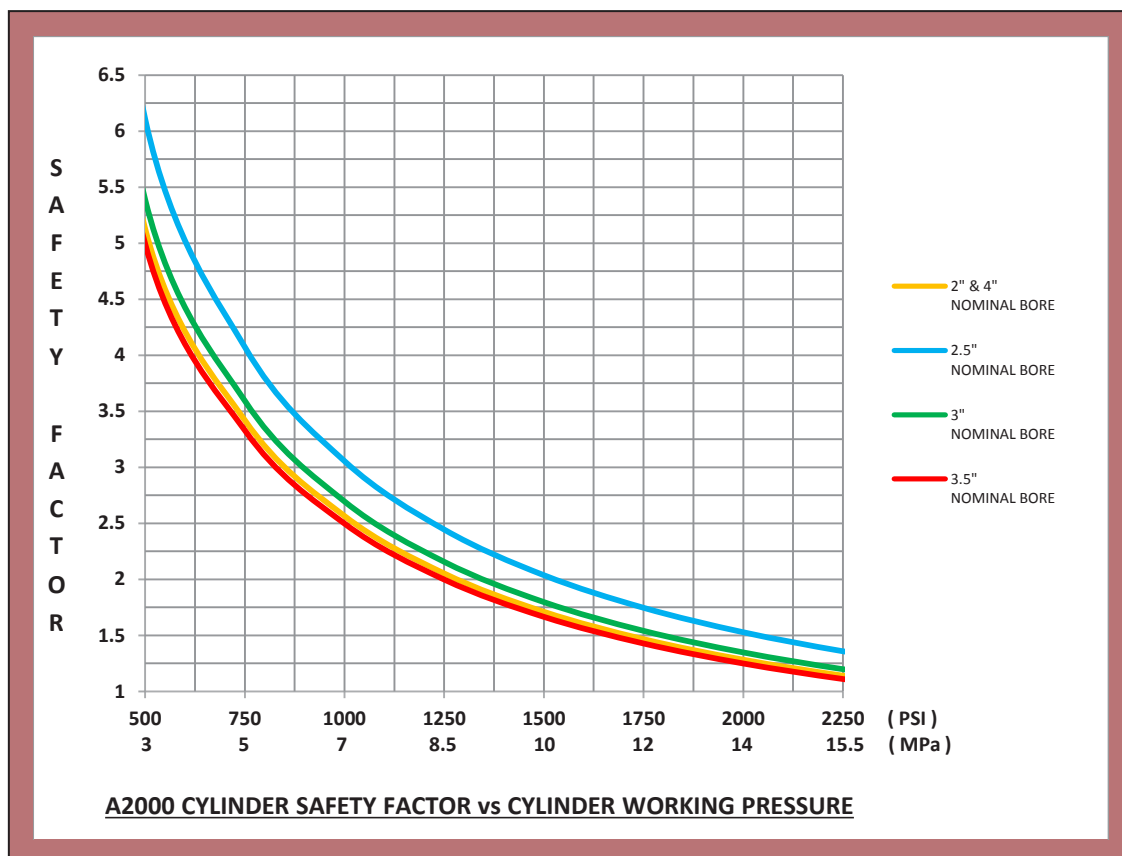
Cylinder Size	Part Number	Ø CD	CB	CE	CS	CW	E	Thread
2.0" X 1.125"	APP-800-SS	25.48 ^{+0.05} _{-0.0}	28.58	82.5	51	68	51	7/8" UNF 14
2.5" X 1.25"	APP-1000-SS	25.48 ^{+0.05} _{-0.0}	28.58	82.5	51	68	51	1" UNF 12
2.5" X 1.5"	APP-1250-SS	25.48 ^{+0.05} _{-0.0}	28.58	82.5	51	68	51	1¼" UNF 12
3.0" X 1.5"	APP-1250-SS	25.48 ^{+0.05} _{-0.0}	28.58	82.5	51	68	51	1¼" UNF 12
3.5" X 1.5"	APP-1250-SS	25.48 ^{+0.05} _{-0.0}	28.58	82.5	51	79	63	1¼" UNF 12
4.0" X 1.75"	APP-1500-SS	25.48 ^{+0.05} _{-0.0}	28.58	82.5	51	79	63	1½" UNF 12



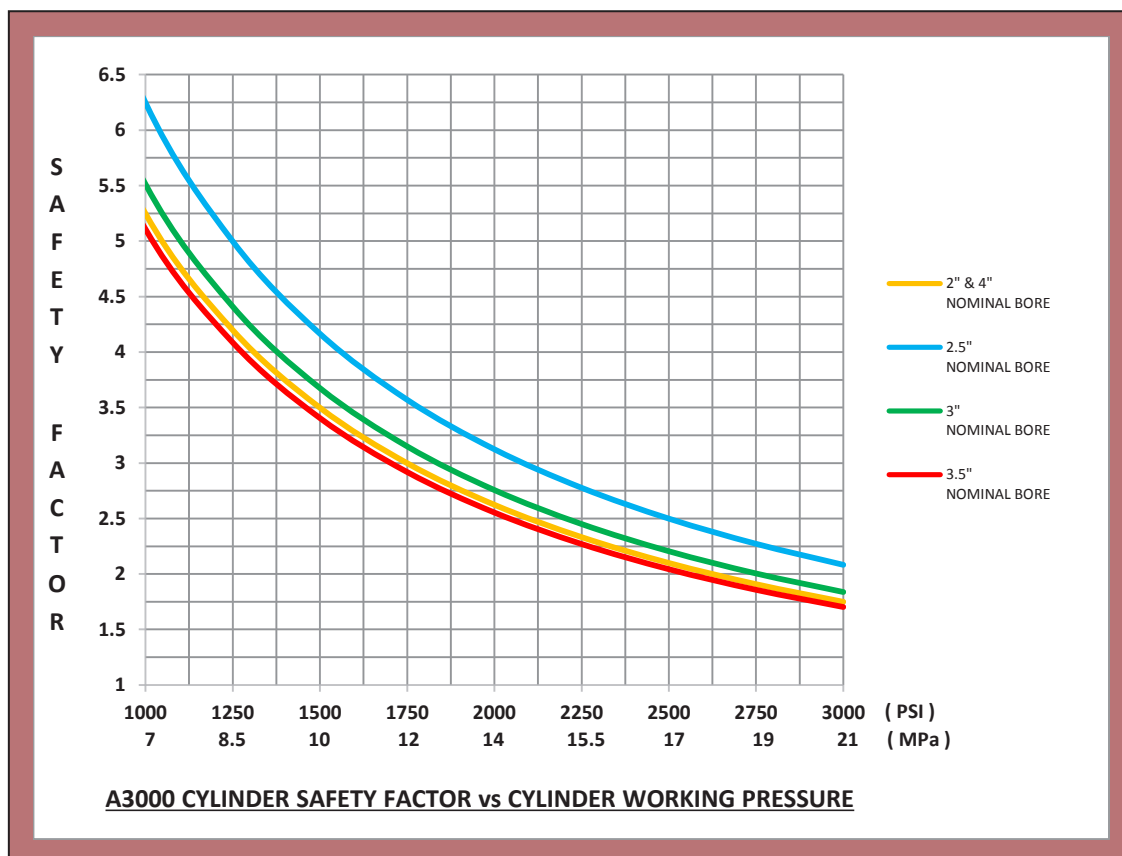
**FACTORY FITTED AND
TESTED CARTRIDGE VALVES**

- Load Control valve, single or double
- Proportional Directional control valves
- Pilot Operated Check valves
- Stainless Steel covers for cartridge valves

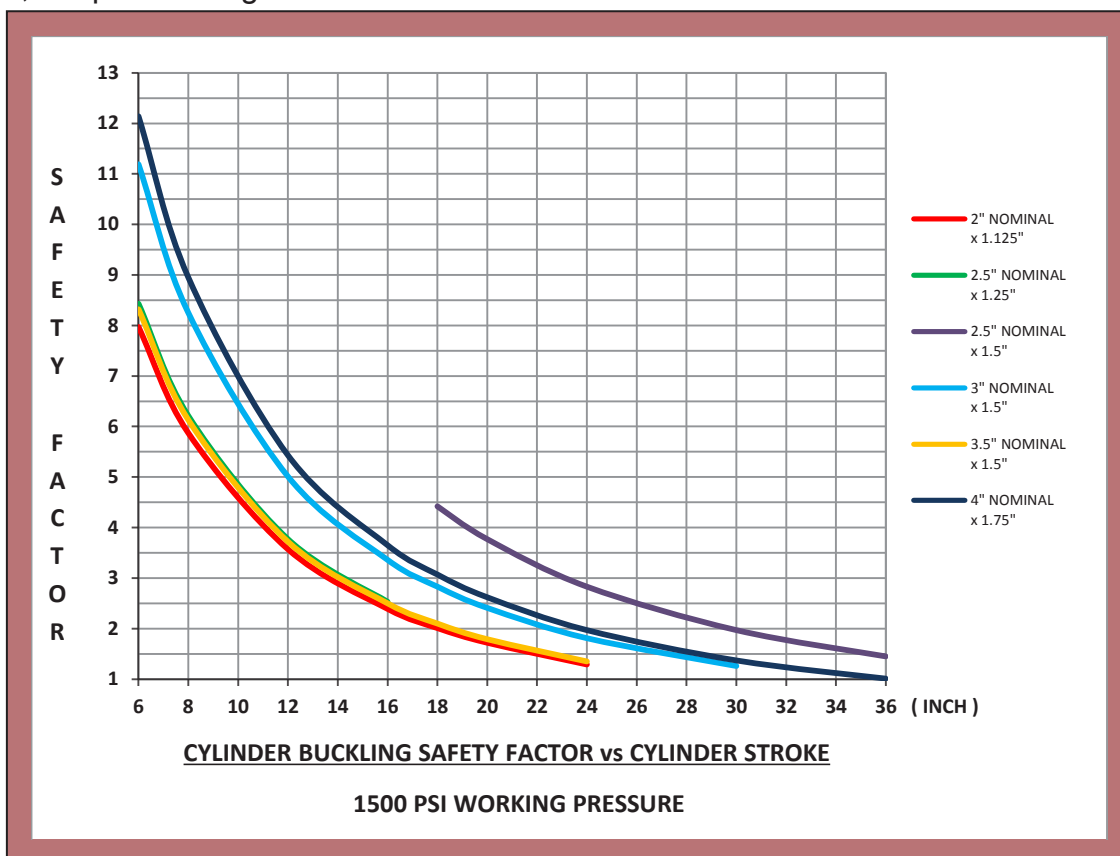
Model A2000



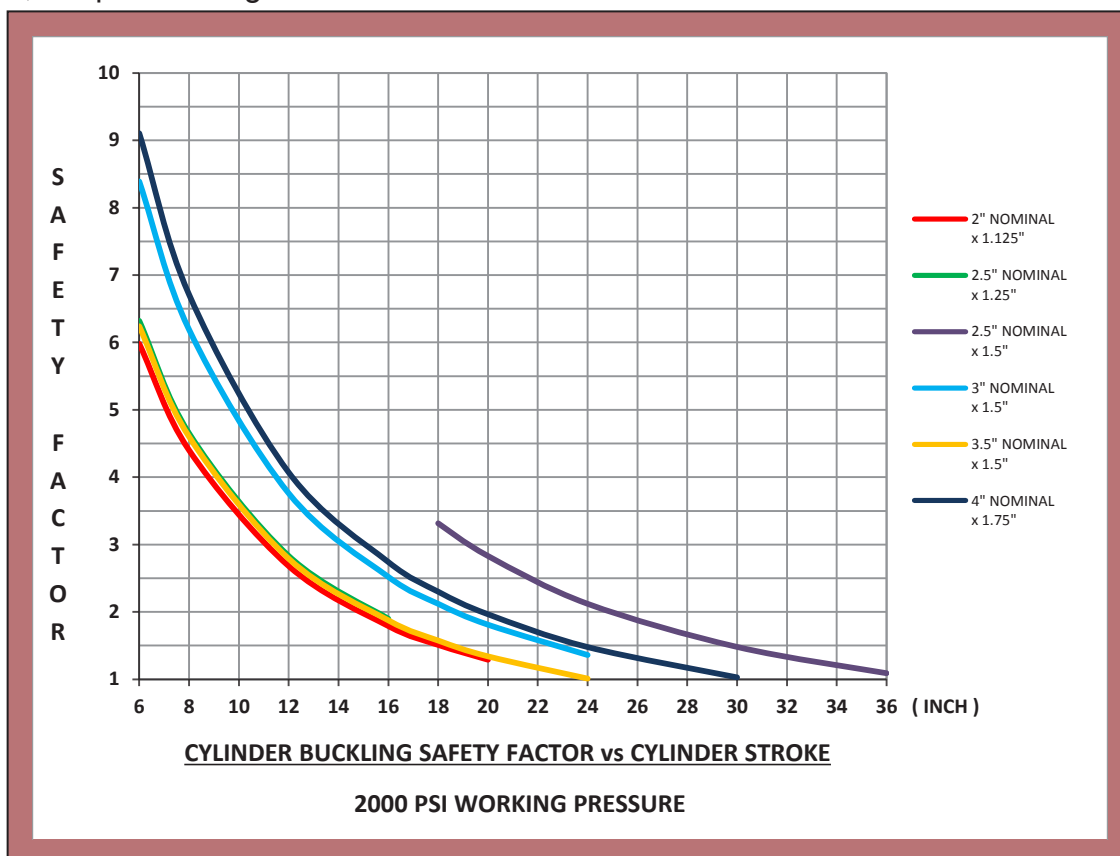
Model A3000



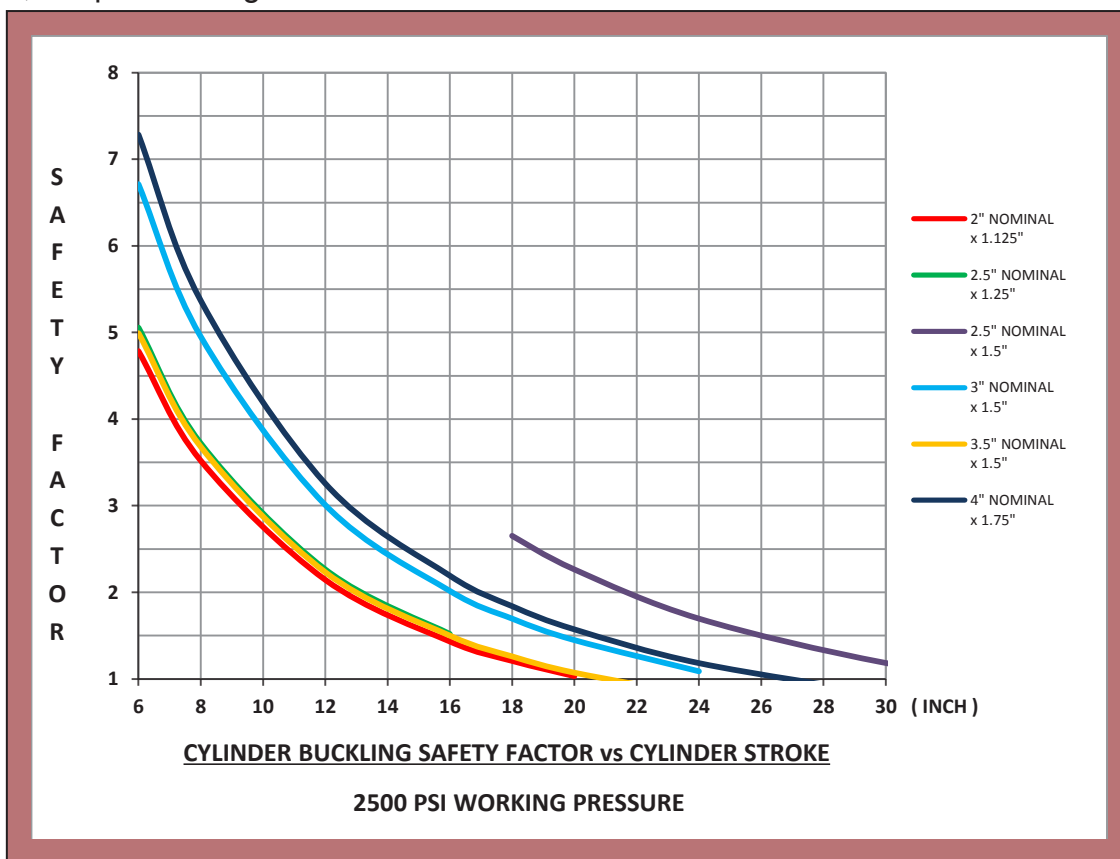
1,500 psi Working Pressure



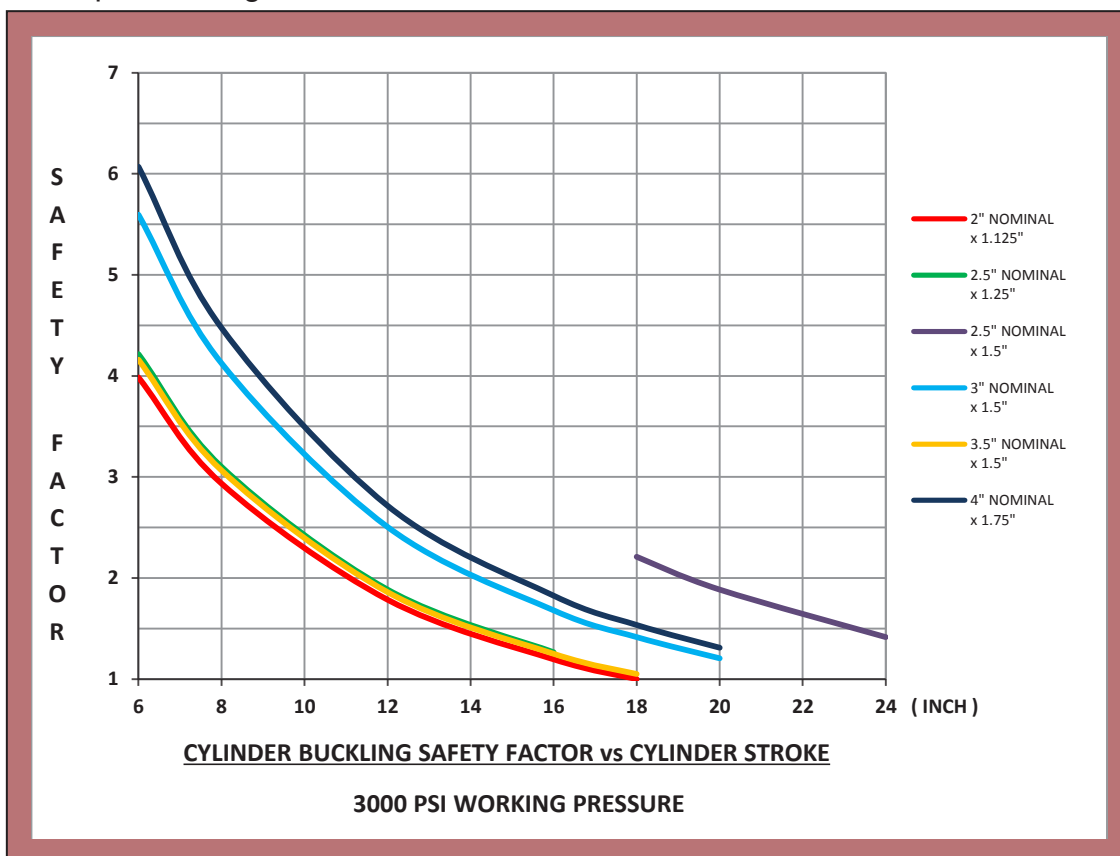
2,000 psi Working Pressure



2,500 psi Working Pressure



3,000 psi Working Pressure



When requesting a quote or ordering a hydraulic cylinder it is necessary to supply the factory with the below cylinder code. This will accelerate the quoting process and accurately define all aspects of the cylinder required. Custom cylinder requirements must be noted in full within your quote request and confirmed by the factory whom will then issue a unique SB (special build) number for inclusion in the ordering code.

Cylinder Ordering Code

A - 3 0 0 0 - S S - 4 - 1 . 5 - 1 6 - S B 0 0 1

A.S.A.E Interchangeable

Cylinder Model Refer Page 6

2000 - ≤ 2,000 psi. (14 MPa)

3000 - ≤ 3,000 psi. (21 MPa)

Stainless Steel

Bore Ø (Inch) Refer Pages 6, 7 & 8

Rod Ø (Inch) Refer Pages 7 & 8

Stroke (Inch) Refer Pages 7 & 8

Special Build Number (Optional)

Number issued after consultation with factory

Summary of Ordering Code Above

A Stainless Steel hydraulic cylinder which is interchangeable to A.S.A.E standards. The Bore size is 4.0" in diameter and the Rod size is 1.5" and the stroke is 16.0". An optional Special Build number has been used which would be issued from the factory after consultation on changes to the cylinder's standard specification.



Queensland Hydraulics Pty Ltd

◀ Success through Quality ▶

Phone: 07 3276 7533
Fax: 07 3276 8233

Web: www.hydraulics.net.au
Email: admin@hydraulics.net.au

